

# French Reverse Tuck (FRT)

Same as the Standard Reverse Tuck (SRT) except that the tucks are on panel two instead of panel four, depending on presentation preference. An economical choice, sometimes referred to as RNT (Reverse Notch Tucked), RTE nests better than STE (Straight Tuck End). Tucks may have either friction fit or slit locks for a more secure closure. Suited to either automatic or manual product loading, and are easier to open and close.

## Pros to French Reverse Tuck

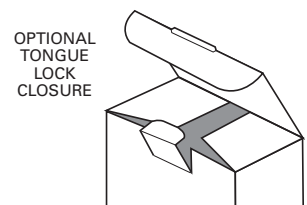
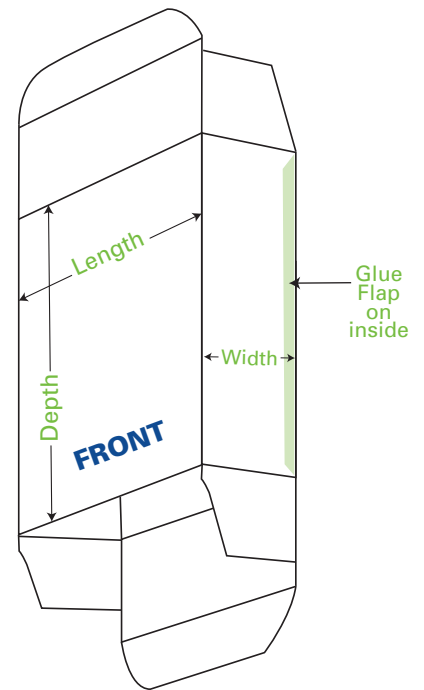
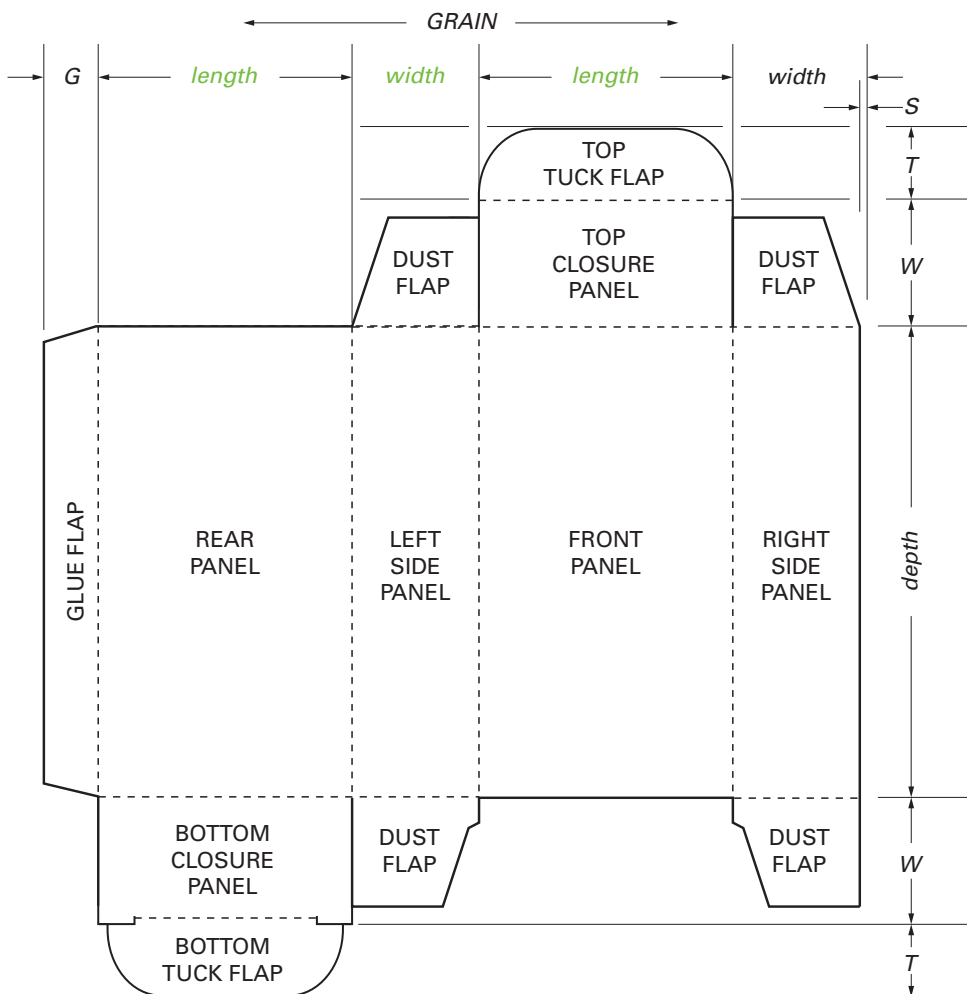
- Cost Effective, you can run more boxes at one time on the same sized paperboard as opposed to the Straight Tuck End, reducing waste and setup fees.
- Easy Assembly
- Compact Storing (stores flat) for excess packaging inventory.
- Relatively quick load your product in this packaging.
- Works well for lighter weight products

## Cons to French Reverse Tuck

- Not good for heavy products..

## Industries that most commonly use SRT

Health and Beauty, Cosmetics, Pharmaceutical, Electronics, Nutraceutical



Size measured: L x W x D